

Connected Bus

The Future of School Transportation

INTRODUCTIONS



LEA BOGLE
PRESIDENT & CEO



RACHEL ALLGAIER
GRANT COMMUNICATIONS MANAGER



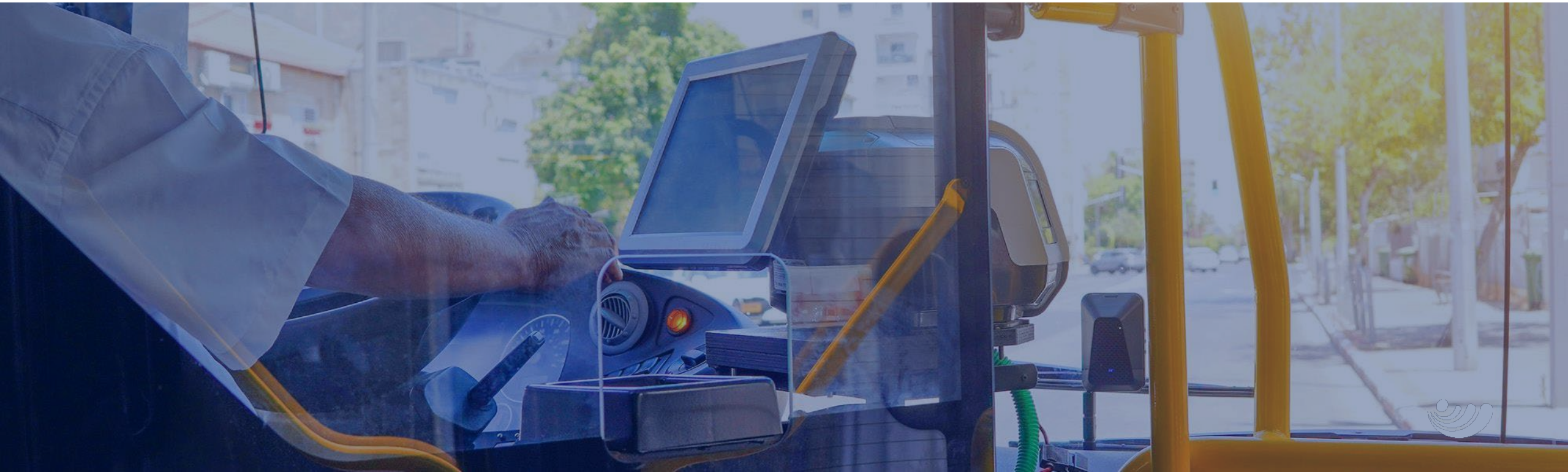
OVERVIEW

- ✓ **Our Mission**
- ✓ **Quick Check**
- ✓ **Internet Access for School Buses**
- ✓ **E-Rate: “Learn Without Limits”**
- ✓ **Make School Bus Wi-Fi the Standard**
- ✓ **Funding for GPS & Student Tracking**
- ✓ **Radios & School Safety**
- ✓ **Building Blocks of a School Safety Plan**
- ✓ **Funding for School Bus Tech**



OUR MISSION

Premier Wireless enables innovation, communication, safety, and transformation through technology.



CONNECTED BUS CONNECTIVITY



**REAL-TIME
CAMERA ACCESS**



**WI-FI ON
THE BUS**



**WI-FI AROUND
THE BUS**



**GPS
TRACKING**



**STUDENT
SIGN ON**



**CLOUD
MANAGEMENT**



BUS WI-FI INCREASES SAFETY



Bus Wi-Fi keeps students occupied, reducing behavioral incidents and allowing drivers to remain focused on the road.

REAL-TIME VISIBILITY

- Bullying
- Fighting
- Vandalism
- Accidents
- Missing Children
- Medical Emergencies



BUS WI-FI IMPROVES STUDENT OUTCOMES

In rural communities, the daily student commute can be over 2 hours each way, that's **over 4 hours** per day

The average student's commute in the U.S. is **over 1 ½ hours** per day

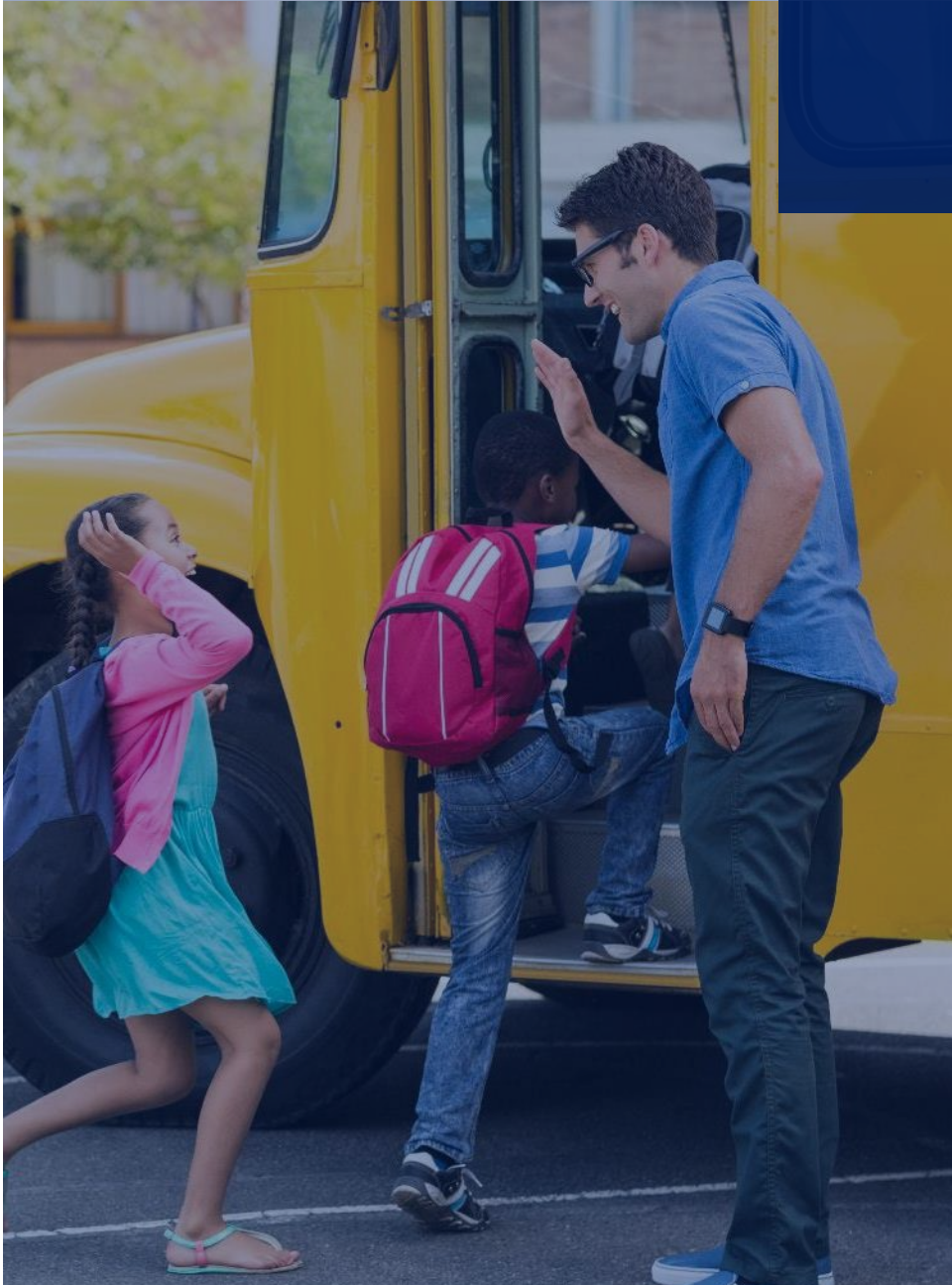
Student athletes can average an **additional 3 – 6 hours** per week traveling for competitions

BUS WI-FI PROVIDES

- Equity for all
- Extended learning time
- Increased engagement
- Improved test scores



MAKE SCHOOL BUS WI-FI THE STANDARD



Jessica Rosenworcel Plans To Make School Bus Wi-Fi Permanent Subsidy

By John Eggerton last updated May 11, 2022

It is currently part of temporary pandemic-related program



(Image credit: JohnStaleyPhoto.com)



E-RATE: “LEARN WITHOUT LIMITS”

WHAT IS E-RATE?

The program provides discounts to assist most schools and libraries in the United States in obtaining affordable high-speed Internet and telecommunication services.

WHAT DOES IT COVER?

Program participants may request funding in 5 categories:

- Telecommunications
- Telecommunications Services
- Internet Access
- Internal Connections
- Basic Maintenance of Internal Connections

HOW DOES IT WORK?

Discounts for support depend on the level of poverty and the urban/rural status of the population served and range from 20 percent to 90 percent of the costs of eligible services.



BUILDING BLOCKS OF A SCHOOL SAFETY PLAN

PREVENTION
PROTECTION
MITIGATION
RESPONSE
RECOVERY





CONNECTED BUS CROSSWALK K-12



**STUDENT TRACKING
& PARENT APP**



**GPS &
ROUTING**



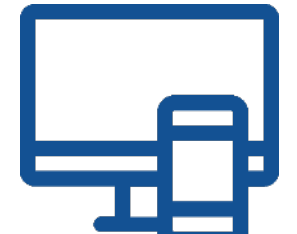
**TURN-BY-TURN
DIRECTIONS**



**FIELD TRIP
MANAGEMENT**



**PRE & POST
TRIP INSPECTIONS**



**SCHOOL
INFORMATION
SYSTEM
INTEGRATION**



GPS & STUDENT TRACKING INCREASES SAFETY

GPS & student tracking provide real-time information to help you better manage your fleet and respond to school bus-related inquiries.

REAL-TIME VISIBILITY

- Improves driver behavior
- Improves student behavior
- Reduces incidents of “missing” students
- Reduces incidents of students missing the bus
- Prevents students from boarding the wrong bus
- Prevents students from being left at the wrong stop





ROUTING & TURN-BY-TURN DIRECTIONS

Routing & turn-by-turn directions improve the efficiency of your fleet, saving thousands in maintenance, fuel, labor, and turnover.

ROUTING & TURN-BY-TURN DIRECTIONS

- Create stops in seconds
- Easily create & adjust routes
 - Ridership reports
 - Route history reports
- Reduce incidents of “lost” buses
- Help new & substitute drivers learn routes



FUNDING FOR GPS & STUDENT TRACKING

It could pay for itself... Can we do that for you?

| | YEAR 1 | YEAR 2 | YEAR 3 | YEAR 4 | YEAR 5 | TOTAL |
|--|------------------|------------------|------------------|------------------|------------------|------------------|
|  MAINTENANCE | \$10,400 | \$10,400 | \$10,400 | \$10,400 | \$10,400 | \$52,000 |
|  FUEL | \$22,600 | \$22,600 | \$22,600 | \$22,600 | \$22,600 | \$113,000 |
|  LABOR | \$134,000 | \$134,000 | \$134,000 | \$134,000 | \$134,000 | \$670,000 |
|  DEPRECIATION | \$15,000 | \$15,000 | \$15,000 | \$15,000 | \$15,000 | \$75,000 |
| TOTALS | \$182,000 | \$182,000 | \$182,000 | \$182,000 | \$182,000 | \$910,000 |



RADIOS & SCHOOL SAFETY

THE QUESTION

Are you on a different radio system than the schools?

THE CHALLENGE

If there's an emergency, how do you communicate?





FUNDING FOR SCHOOL BUS TECH

ESSER

E-RATE

COPS – STUDENT VIOLENCE PROTECTION PROGRAM

GOVERNOR SCHOOL SAFETY GRANTS

GENERAL FUND

FEDERAL TRANSPORTATION FUNDING

CLEAN SCHOOL BUS PROGRAM

SCHOOL FOUNDATIONS & PTOs

LOCAL & NATIONAL FOUNDATION GRANTS



FUNDING FOR SCHOOL BUS TECH

ESSER

Purchase educational technology (including hardware, software, and connectivity) for students to aid in remote learning and extended learning time.

Also, purchase equipment for responding to or preparing for another pandemic related incident:

Phase II – funds must be obligated by 9/2023

Phase III – funds must be obligated by 12/2024



Most schools still have unspent funds.



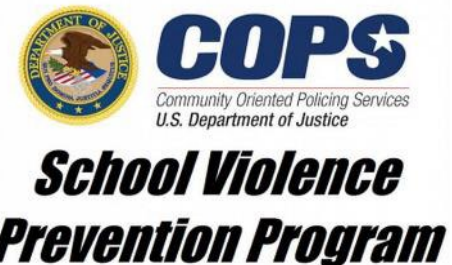
FUNDING FOR SCHOOL BUS TECH



COPS: STUDENT VIOLENCE PROTECTION PROGRAM

The **Students, Teachers, and Officers Preventing School Violence Act of 2018 (STOP School Violence Act of 2018)** gave the **COPS Office** authority to provide awards directly to States, units of local government, or Indian tribes to improve security at schools and on school grounds in the jurisdiction of the grantee through evidence-based school safety programs and technology.

Opens every spring for grants up to approximately \$500,000.



FUNDING FOR SCHOOL BUS TECH

GOVERNOR SCHOOL SAFETY GRANTS



FUNDING FOR SCHOOL BUS TECH

CLEAN SCHOOL BUS PROGRAM

2023 Notice of Funding Opportunity OPEN

EPA anticipates awarding approximately \$400 million in competitive grant funding under the **Clean School Bus (CSB) Grants Program** and **Notice of Funding Opportunity (NOFO)**. The program is soliciting applications nationwide for a grant competition to fund the replacement of existing school buses with clean and zero-emission (ZE) school buses.

Application Deadline is 8/22/2023

Remember to include your bus tech when ordering your buses.

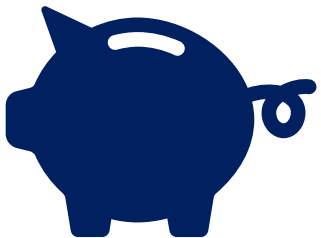


FUNDING FOR SCHOOL BUS TECH

LOCAL & NATIONAL FOUNDATION GRANTS

Hundreds of thousands of private foundation grants are available for education, technology, rural or low-income communities, and more.

- Charitable donations made by private organizations, or wealthy individuals and families in your community.
- Large funding needs: Microsoft, United Way, Dollar General, Kroger, Bank of America.
- Smaller funding needs: Look within your city, region, or state (or put a few smaller awards together for larger purchasing power).



**THERE'S STILL TIME:
POST YOUR
QUESTIONS IN Q&A**

WE'RE HERE TO HELP



(281) 667-0404
premierwireless.com

