

Cradlepoint W2005 Series

Outdoor 5G wideband adapter designed for high-performance branch applications

MSRP: \$1,699 - \$2,799



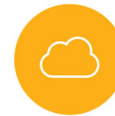
Passthrough Throughput: 2.3 Gbps



WAN Connectivity: 5G Sub-6 & 4G Cat 20



LAN Connectivity: 2.5 GbE



Management: NetCloud

Designed for branches that require the higher performance of 5G, the Cradlepoint W2005 Series is an enterprise-class 5G wideband adapter that ushers in the next generation of wireless WAN networking. The W2005 Series adapters can be paired with a Cradlepoint router in “captive modem mode” to provide virtual single-endpoint deployment, monitoring, and control. Or, the adapters can connect to a third-party router via an Ethernet connection.

The Cradlepoint W2005 5G Wireless Adapter is designed to be placed outdoors for optimal signal acquisition. With an IP67 rating, the hardened metal casing of the W2005 is designed to withstand extreme temperatures, water, and high winds.

Key Features:

- 5G tools and value confirmation built into the NetCloud Platform
- Mobile wizard-based installation application for optimal set up and signal acquisition
- Dual Connectivity: Simultaneous 5G and 4G network connections
- “Captive modem mode” for singular router/adapter control and management
- Deep wireless analytics assisted by machine learning
- Carrier-class connectivity with multiple levels of test and recovery
- Adaptive to any networking and SD-WAN environment
- Zero-touch deployment and Day-1 broadband without on-site IT staff
- Advanced Remote Management suite

©Cradlepoint. All Rights Reserved. | All specifications subject to change without notice

For More Information, Contact:



www.pwbts.net
281-667-0404

Hardware Specs

Category	Branch
Cloud Management	NetCloud
5G Status	Dual Connectivity, 5G Sub-6 & 4G Cat 20
Form Factor	Metal
Ethernet Ports	2 x 2.5 GbE (LAN/WAN switchable)
USB Ports	0
Serial Ports	0
Dual-Modem Support	No
Cellular Standards	PTCRB (U.S.), GCF (global)
Required Carrier Certifications	AT&T, Verizon, Telstra
Regions	W2005-5GA: Australia only W2005-5GB: Worldwide
Public Safety Networks	No
Wi-Fi	802.11ax Wi-Fi 6 (installation only)
GNSS/GPS	Active
PoE	802.3bt
Operating Temperature	-30 °C to 60 °C (-22 °F to 140 °F)

NetCloud for Branch Adapter Features

Cradlepoint W2005 Series 5G Adapter is purpose-built for the NetCloud Service for Branch which includes:

- Centralized endpoint management with insights and visual analytics
- 24x7 enterprise support and limited lifetime warranty
- On-demand training

Secure Remote Management & Orchestration	●
Adapter Operating Modes (IP Passthrough, IP Passthrough with Inline Failover, NAT, Captive Modem)	●
Traffic Steering & QoS	●
Diagnostics & Troubleshooting	●
Insights, Alerts & Dashboard Analytics	●
Extensibility (SDK, API, third-party integrations)	●
In-Band & Out-of-Band Management	●
Real-Time Troubleshooting Tools	●
Cellular Health & Modem Data-Usage Dashboards	●
Customized Failover Report	●

● *Included* ● *Advanced*