

# Inseego Connect™ MSRP: \$39.99 - \$254.99

## Deployment, remote management and monitoring simplified

Inseego Connect is the new cloud-based configuration and monitoring application provided by Inseego. Customers can remotely monitor device health and status with powerful dashboards and insightful diagnostics.

**View & Configure Device Inventory**  
Remotely configure device settings, centralize device information, and pinpoint asset location.

**Analytics & Dashboards**  
Supervise your deployment with informative dashboards and identify rogue users who are consuming excessive data.

**Predict Data Usage**  
Set data usage thresholds, alerts, and notifications to avoid overage fees. Monitor data usage on pooled data plans.

**GPS-Based Location Services**  
Track current and historical device location. Find lost equipment and receive alerts of theft.

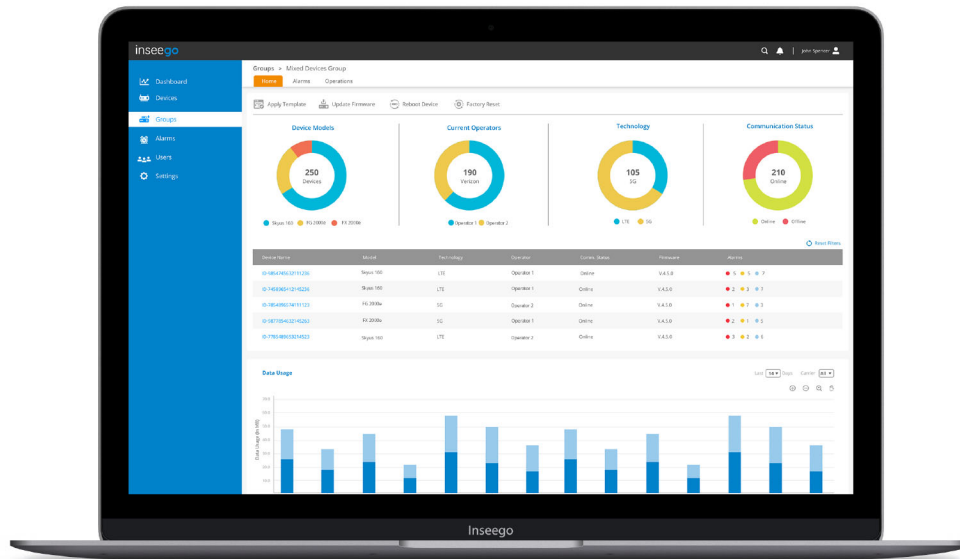
**Monitor Health & Performance**  
Analyze key health metrics like signal strength and temperature readings. Troubleshoot inconsistent connections and generate critical alerts.

**Mobile Support**  
Monitor and manage your devices while on-the-go. Support for professional and self installation of Inseego 5G devices.

For More Information, Contact:



www.pwbts.net  
281-667-0404



## Inseego Connect Features

### Device Data & Diagnostics

- Inventory data (model, firmware, IMEI, etc.)
- Network data (signal strength, data usage, etc.)
- Hardware data (GPS, battery stats, GPIO readings)\*
- Identify trends with configurable charts\*
- 90 days of data storage\*

### Device Groups

- Logical groups for simplified device management
- Static and dynamic group definitions

### Device Configuration

- View and edit all device settings
- Bulk configure groups of devices
- Initiate firmware updates
- Remotely reboot and factory reset devices

### Alarms

- Set alarm priority and schedule when active
- Monitor individual or groups of devices
- Select recipients for in-app and email alerts
- Geofence alerts to detect device movement\*

### Dashboards

- Overview of inventory, data usage & active alarms
- Map view of all device locations\*

### User Management

- Easily add and delete users
- Configurable role-based user permissions\*

Specifications are subject to change. Please see your Inseego contact for more details. ©2021 Inseego Corp. All rights reserved. The Inseego name and logo are trademarks of Inseego Corp. Other Company, product or service names mentioned herein are the trademarks of their respective owners.

\*Select features available only in Inseego Connect Advanced  
Rev. 4

	Inseego Connect	Inseego Care	Inseego Subscribe	Inseego Secure	Extended Warranty	MSRP
<b>Inseego Connect Advanced</b>						
1 Yr. License	✓	✓				\$39.99
3 Yr. License	✓	✓				\$99.99
<b>Inseego Manage Advanced</b>						
3 Yr. License	✓	✓	✓	✓	✓	\$229.99
5 Yr. License	✓	✓	✓	✓	✓	254.99

### Inseego Care

A dedicated support service offering live agent phone and chat, Knowledge Base access, expert support of device deployment configurations, and rapid return merchandise authorization (RMA) replacement.

### Inseego Subscribe

Inseego Subscribe is a multi-tiered telecom procurement and subscription management platform for wireless assets. With Inseego Subscribe, service providers can offer tailored device procurement and subscription management to enterprise and government customers, enabling them to manage complex contract workflows and device services, including the ability to run detailed reports to monitor usage and expenses.

### Inseego Secure

Get real-time security insights and configure policies, set content filtering rules, and enforce protection against a wide range of cybersecurity threats—all through a user-friendly and intuitive dashboard.