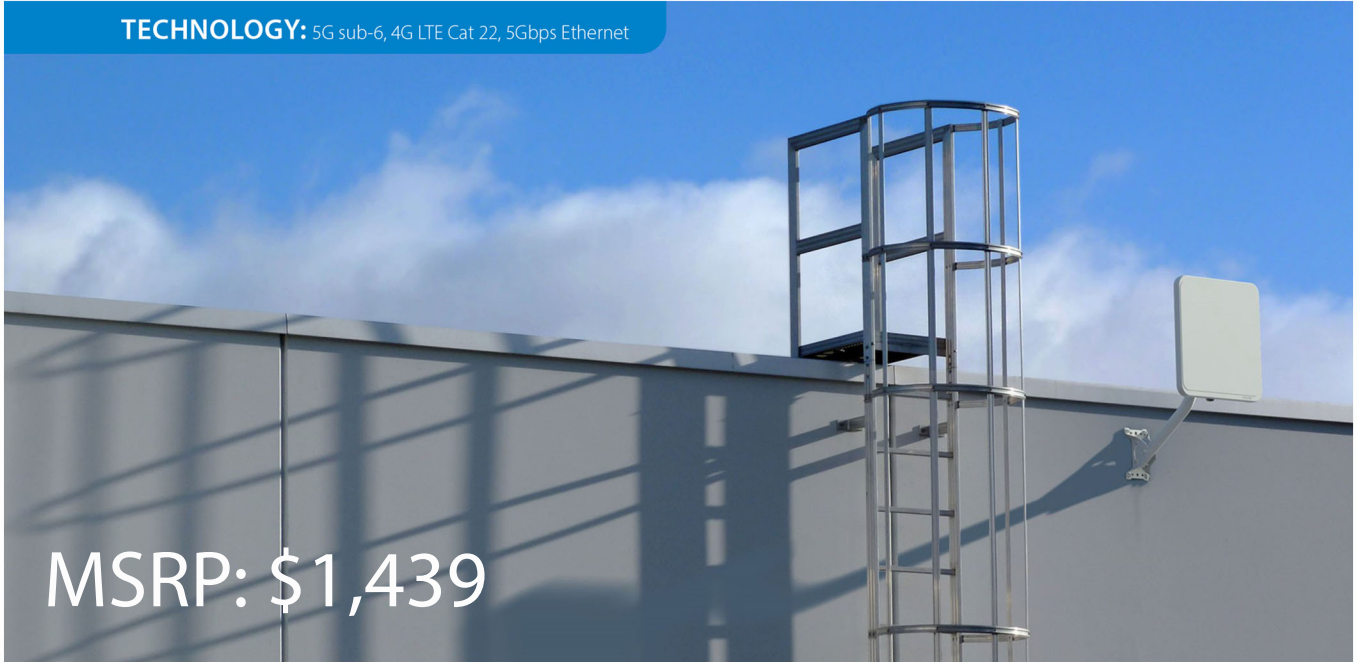


**TECHNOLOGY:** 5G sub-6, 4G LTE Cat 22, 5Gbps Ethernet



**MSRP: \$1,439**

**BRINGING FAST 5G CONNECTIVITY TO MORE BUSINESSES  
INSEEGO WAVEMAKER™ PRO 5G OUTDOOR CPE FW2000E**

**About Inseego**

As a U.S. based company, we design and develop all of our products in the USA and hold them to the highest security standards. Our products and solutions are trusted by top tier carriers, government entities, and fortune 500 enterprise customers.



**High gain antennas**

Sophisticated antenna array delivers up to 14dbi gain to achieve longer range and higher all-around data throughput at all distances.

**Fast 5G connectivity**

Delivers fast 5G speeds, higher bandwidth and low latency to more suburban and rural customers.\*

**Advanced networking and security**

Advanced networking features including Secure Firewall, DMZ, MAC Filtering, IP Passthrough, VPN Passthrough, Manual DNS, Port Filtering and Port Forwarding.

**Device management + Inseego Connect™**

Convenient remote device management capabilities for a single device included, plus tiered upgrade options for advanced device management, monitoring, and diagnostics for multiple devices from a single dashboard.

**Dual SIM, multi-carrier support**

Support for up to 2 carrier SIMs and auto-switching between carriers. Multi-carrier firmware allows the FW2000e to be used on most major global carriers.

**For More Information, Contact:**



www.pwbts.net  
281-667-0404

## 5G FW2000e Product Specifications

### Network Connectivity\*

- 5G sub-6 GHz
- 4G LTE Cat 22
- 4x4 MIMO sub-6 GHz
- 256 QAM sub-6 GHz

### Bands Supported

- 5G NR: n1/n2/n3/n5/n7/n12/n20/n25/n28/n38/n40/n41/n46/n48/n66/n71/n77/n78
- 4G LTE: B1/B2/B3/B4/B5/B7/B8/B12/B13/B14/B17/B20/B25/B26/B28/B29/B30/B32/B38/B39/B40/B41/B42/B43/B46/B48/B66/B71
- Band support varies by regional SKU

### Chipset

- Qualcomm® Snapdragon™ SDX55

### Ports

- (1) 5Gbps Ethernet LAN port

### LED Indicators

- (1) Power and status LED

### Power

- Power over Ethernet (PoE) - 802.3bt Type 3

### High Gain Antennas

- 14dBi: 3.3GHz - 4.2GHz
- 12dBi: 1.7GHz - 2.7GHz
- 5dBi: 1.5GHz
- 0-4dBi: 600MHz - 1.0GHz

### Standards /Approvals /Certifications

- FCC/GCF/PTCRB
- CE/ISED/MIC/RCM-ACMA\*\*
- Bluetooth SIG



X55 5G modem-RF system

### Accessories

- PoE injector (included)
- SIM tool (included)
- J-arm mount (optional, sold separately)
- Wall mount (optional, sold separately)
- Pole mount (optional, sold separately)

### Dimensions & Weight

- 430mm x 400mm x 71.7mm (16.9" x 15.75" x 2.8")
- 4.22 kg (9.3 lbs)

### Operating Temperature

- -30°C to 70°C (-22 to 158°F)

### Environmental

- IP67 rating for water and dust ingress protection
- Internal heating element for startup and operation in cold environments

### SIM

- Dual SIM, (2) Nano 4FF SIM slots
- Multi-carrier support with auto-switching

### Web UI Operating Systems Supported

- Windows 10 and later
- MacOS 10.14 and later
- Linux® Ubuntu 18.04 LTS and later

### Security

- 3rd Party cybersecurity penetration testing verified
- Security hardened web interface
- Password hash
- Anti-CSRF
- Session timeout
- Incorrect password lockout
- IP passthrough
- Firewall with adjustable settings and rules
- Port filtering, port forwarding, MAC filtering

### Environmental Standards

- RoHS/WEEE/REACH