



MSRP: \$399

PEPWAVE | AP ONE AX

Better Coverage and Speed with Wi-Fi 6

Deploy Anywhere, Manage Centrally

Turnkey or Custom Captive Portals

Enterprise-Grade Fast Roaming

Seamless Peplink SD-WAN Integration

For More Information, Contact:

Manage Centrally, No Extra Hardware Needed

SSID Management

SSID	Security	SSID Visibility	Radio Selection
Production	WPA2 - Personal	✓	2.4 GHz band only
_Guest_2_4G	WPA2 - Personal	✓	2.4 GHz band only
_Guest_5G	WPA2 - Personal	✓	5 GHz band only
Production_5G	WPA2 - Personal	✓	5 GHz band only
Workshop	WPA2 - Personal	✓	2.4 GHz band only
Workshop_5G	WPA2 - Personal	✓	5 GHz band only
Guest	WPA2 - Personal	✓	2.4 GHz band only
Guest_5G	WPA2 - Personal	✓	5 GHz band only

Usage Report

Usage Reports

Data Usage: Hourly Daily Monthly Unit: MB GB TB

Device Selection: All By products By tags

Generate Report

Daily Report

Daily Usage

199.63 GB

195.31 GB

0 GB

Day	Download	Upload	Total
2020-07-13	52.99 GB	17.21 GB	70.19 GB
2020-07-12	14.86 GB	3.87 GB	18.74 GB
2020-07-11	15.34 GB	0.67 GB	16.01 GB

Searchable Event Log

Search & Filter

Type Details

- System Time synchronization successful
- System Time synchronization failed
- System Time synchronization successful
- System Time synchronization failed
- System Time synchronization successful
- System Time synchronization failed
- System Change applied
- System Change applied
- System Change applied
- System Change applied
- System InControl has updated the configuration as logs were updated
- System InControl has updated the configuration as logs were updated
- System InControl has updated the configuration as logs were updated

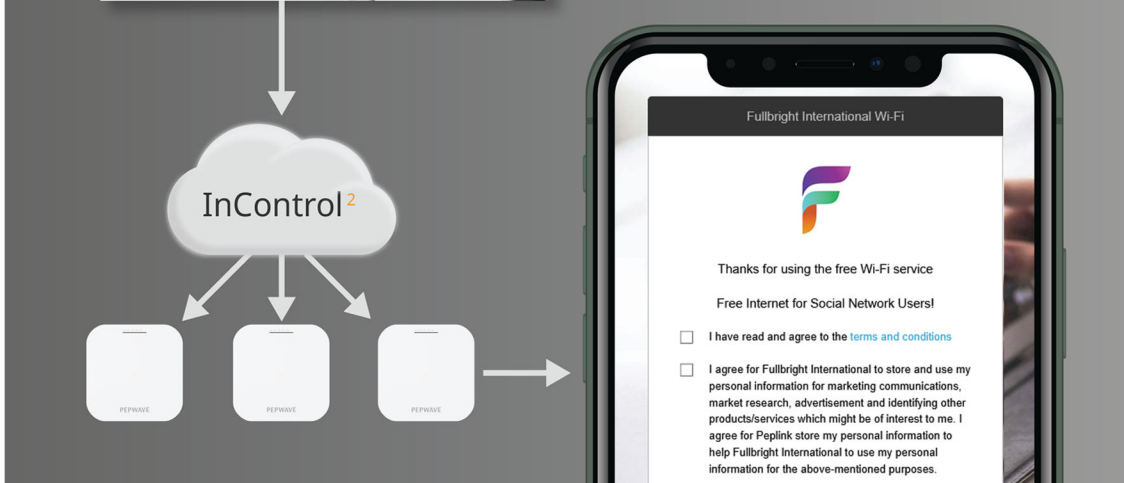
Each AP One AX comes equipped with InControl central management. View the health and data usage of your network from any web browser. Centrally manage

your network's SSID and radio settings from a single pane of glass. Use the searchable event log to quickly diagnose your entire network.

Turnkey or Custom Captive Portals

Customize your captive portal as little or as much as you would like. Right out of the box, it includes a captive portal ready for immediate use.

For a more branded user experience, you can edit every aspect of the captive portal using InControl.



Simply Better Wi-Fi

Wi-Fi 6: Faster, Better

This technology is 45% faster than Wi-Fi 5, has 4x more device capacity, and consumes less power for connected devices.

Enterprise-Grade Fast Roaming

This device supports 802.11k, v, and r, providing users with a more seamless roaming experience between access points.



Seamless Peplink SD-WAN Integration

The AP One AX works seamlessly with other services in the Peplink ecosystem,

providing unique network capabilities, unmatched network flexibility and ease of use.

InControl Central Management

Monitor network health on a single dashboard. Push configuration profiles on multiple devices at once. Remotely access the Web Admin of any device.

Balance/MAX/FusionHub

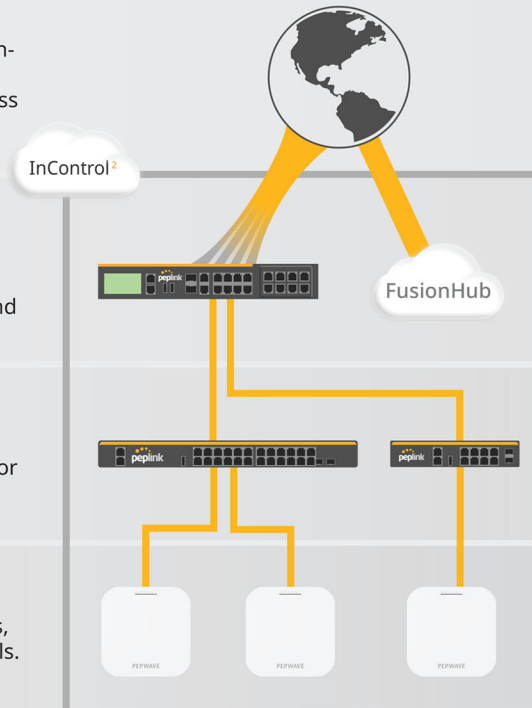
Provides unbreakable connectivity by combining multiple WANs. Works with InControl to centralize VLAN, firewall, and outbound policy.

SD-Switch

Works with InControl to remotely configure and activate PoE ports. Monitor power consumption.

AP One

Works with InControl to centralize SSIDs, radio settings, and deliver captive portals.



AP ONE AX SPECIFICATIONS

Product Code	APO-AX
Ethernet Port	1x 2.5 Multigigabit Ethernet
Wi-Fi Standard	1x 2.4Ghz 802.11b/g/n/ax 1x 5Ghz 802.11a/n/ac/ax
Data Rates	4X4 MU-MIMO 2.4 GHz: up to 1148 Mbps 5 GHz: up to 2400 Mbps
Channel Width	20/40/60/80 MHz
Recommended Concurrent Users per Radio	256
SSID Per Radio	16
Transmit Power	2412 – 2472 MHz: 25dBm 5180 – 5825 MHz: 25dBm
Included Antenna	Built-in Omni Antenna Antenna gain: 5dBi for 2.4GHz, 5dBi for 5GHz
Enclosure	Plenum-rated, Indoor Plastic
Dimensions	8.1 x 8.1 x 1.3 inches 205 x 205 x 32 mm
Weight	1.73 pounds 785 grams
Power Input	DC Jack: 12V DC AC Adapter: AC Input 100V – 240V, DC Output 12V, 2.5A* 802.3 at PoE #
Power Consumption	23W (max.)
Operating Temperature	32° - 104°F 0° - 40°C
Certifications	FCC, CE, RoHS
Warranty	1 Year Limited Warranty
Package Content	AP One AX, Ceiling Mount Base (9/16" T-Rail), Ceiling Mount Base (15/16" T-Rail), Mounting Screw Set

* Optional feature.
PoE Injector is available separately.

Network Bridge Mode Router (NAT) Mode Wireless Distribution System (WDS) Support for PPPoE, Static IP, DHCP Management VLAN Spanning Tree Protocol IPv6 passthrough	AP Security Open WPA/WPA2/WPA3-Personal WPA/WPA2-Enterprise	Client Management Per SSID VLAN with QoS (802.1p/802.1q) Bandwidth Control MAC Address Filtering Layer 2 Client Isolation Limit on Max. Number of Client Per Client VLAN with RADIUS VLAN with VLAN Pool Bandwidth Control Multicast Filter IGMP Snooping/Multicast Enhancement	Captive Portal by InControl Package Contents AP ONE AX Ceiling Mount Screw Kit
Radio Multiple SSID Auto Channel Selection Transmit Power Adjustment Neighbor AP Detection	Device Management Web Administrative Interface InControl Cloud Management Peplink AP Controller SNMP v1, v2c and v3		

Ordering Information

Product Code	Description
APO-AX	4x4 MIMO Wi-Fi 6 AP for Business, manageable by InControl 2. Simultaneous Dual-Band 802.11ax/ac/bg/n

Add-on Feature

Product Code	Description
ACW-107	802.3af/at PoE Injector. Compatible with MAX Hotspot and AP One AX
ACW-602	1x12V3A Power Supply. Compatible with MAX HD2 and AP One AX

