

## Take control

The key to improving life safety and security in schools is through automated situational awareness. FlySense® is a cutting-edge, turnkey solution for detecting vaping and bullying — particularly in school bathrooms and locker rooms. The solution is comprised of an array of multi-sensor devices connected to a cloud-based platform.



### Detect

Vape, Smoke,  
Elevated Sound  
Incidents, and  
Device Tampering.



### Instant Alert Notifications

Alert the designated school  
official when vaping, elevated  
sound or device tampering is  
detected via email or text.



### FlySense® Dashboard

Control your sensors  
through a computer or  
on a smartphone with  
our mobile version.

## How it works

When a sensor detects chemicals from vaping or sound anomalies that suggest bullying / violence, it sends an immediate, location-specific notification to the computers or mobile devices of one or more designated school officials.

### Device Tampering

An audible signal will sound when someone or something else is within the proximity sensor range. Both the proximity range and buzzer volume can be adjusted in the FlySense® Portal.

## Detect. Educate. Deter.

FlySense® provides environmental intelligence that allows a possible dangerous or harmful situation to be addressed in a timely and effective manner — thus averting potential disaster.

Through the FlySense® Dashboard, accessible through a computer or phone with our mobile version, it is possible to obtain analytical reports to determine which locations and time of day experience the most activity to help schools align operations and react accordingly.

## Benefits

Easy installation and set-up. Mount FlySense® on to the ceiling with two screws.

Successfully identify, analyze, manage incidents on school grounds with customizable, real-time SMS and email alert notifications.

Increased situational awareness and deterrence of harmful and dangerous behavior.

Risk mitigation, reduction in the staffing burden for designated coverage areas, and increased efficiency through coordination of resources.



# Fly Sense®

## THE LEADING SOLUTION FOR REAL-TIME VAPING DETECTION

Introducing FlySense®, the real-time vaping, elevated sound incident detection solution that gives you control of areas where you cannot place a camera or microphone.

Support state laws and compliances.

Zero invasion of student privacy.

FlySense® is a registered trademark of Soter Technologies, LLC. FlySense® vape detector is protected by granted and pending patents and design registrations: [www.sotertechnologies.com/patents](http://www.sotertechnologies.com/patents)

© 2021 Soter Technologies, LLC.  
All rights reserved.

For more information, contact:



**T-MOBILE**  
**FOR BUSINESS**  
ELITE PARTNER

☎ 281.667.0404  
[premierwireless.com](http://premierwireless.com)

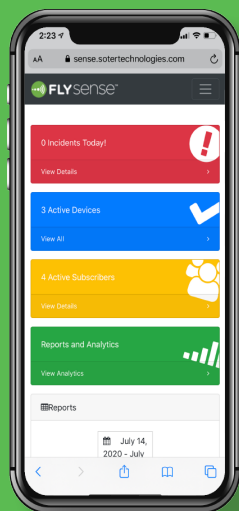
SS-FS286



**COMPONENTS**  
FlySense® Device



Administrator Mobile Access



**Soter Technologies**

101 Comac Street  
Ronkonkoma, NY 11779  
1-877-END-VAPE  
info@sotertechnologies.com  
www.sotertechnologies.com

FlySense® is a registered trademark of Soter Technologies, LLC. FlySense® vape detector is protected by granted and pending patents and design registrations: www.sotertechnologies.com/patents

**Features**



**Incident Detection**

Smart sensor array detects vaping signatures®, sound anomalies associated with bullying / fighting, or device tampering in real time, 24/7.



**Alert Notifications**

Zero-delay, location-specific alert notifications on vape and sound incidents sent by SMS or email to designated school officials.



**Solution Management**

Easy to use administrator web portal for schools teams to manage devices, customize subscriber schedules and view alerts.



**Performance Optimization**

30-day, categorized alert history allows devices to learn environments, reduce false positives, and optimize performance.



**Insights & Analytics**

Real-time sensor data and analytical reports help to determine which locations and time of day experience the most activity.



**Power Options**

Options to power devices via Power-over-Ethernet (PoE) or external input power with Wi-Fi capability.

**Specifications**

| Physical Characteristics |                                   |
|--------------------------|-----------------------------------|
| Dimensions               | 4.75" W x<br>6.56" L x<br>2.20" H |
| Weight                   | 9.0 oz.                           |
| Housing Material         | ABS Plastic                       |

| Connectivity  |  |
|---|--|
| Ethernet data connectivity via built-in RJ-45 connector and 802.3af interface |  |
| 802.11b/g/n/ac Wi-Fi supporting 2.4/5 GHz frequency band                      |  |

| Warranty   |  |
|--|--|
| 1-year limited hardware warranty covers defects in workmanship and materials |  |

| Environment     |                                |
|-----------------|--------------------------------|
| Operating Temp. | 55° to 95°F<br>(12.8° to 35°C) |
| Coverage Area   | 10' x 10' x 9'                 |

| Sensors   |             |
|-----------|-------------|
| Vape      | Temperature |
| Sound     | Humidity    |
| Proximity |             |

| Event Indicators        |  |
|-------------------------|--|
| RGB LED Alert Indicator |  |

| Input Power   |  |
|---|--|
| Built-in 802.3af compliant PoE (over Cat 5e or 6 cable)                       |  |
| External power via 24V 0.5A AC/DC transformer with 5.5mm x 2.1mm DC connector |  |